




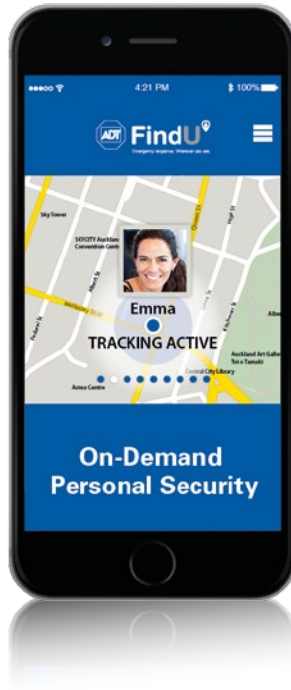
FindU[®]
Emergency response. Wherever you are.

A woman with long brown hair, wearing a dark winter coat and a green scarf, stands inside a glass bus stop shelter. She is looking out the window and holding a small red object in her hands. The scene is set at sunset or sunrise, with warm orange and yellow light reflecting off the glass panels of the shelter. In the background, a street with a few other people and a street lamp is visible under a clear sky.

**Keep you and your family safe
wherever you are**

Extra peace of mind for you and your family.

New Zealand's consistently rated as one of the most desirable places to live in the world. It's why we love it here. We feel free to get out and enjoy everything this beautiful place has to offer. But that doesn't mean you and your family should be lulled into a false sense of security or take unnecessary risks. Because from time-to-time, bad things do happen to good people.



It's smart and simple.

Unique to ADT, New Zealand's largest electronic security provider, FindU turns your family's smartphones into personal security devices. This cloud-based platform has over 4 million downloads in over 90 countries. It works on iPhone, Android and Windows Phone platforms.

Unlike most other personal security devices, FindU is directly integrated into ADT Security's 24/7 professional response centre. So within cellular coverage, if you need help we'll find you, alert your emergency contacts and dispatch a security patrol officer, or advise emergency services.

Wearable devices are available for those on the move.

These devices use Bluetooth connectivity to link with your smartphone, and allow users to activate ADT FindU at the press of a button. They can be worn as a clip-on, wristwatch or necklace.



How ADT FindU works.

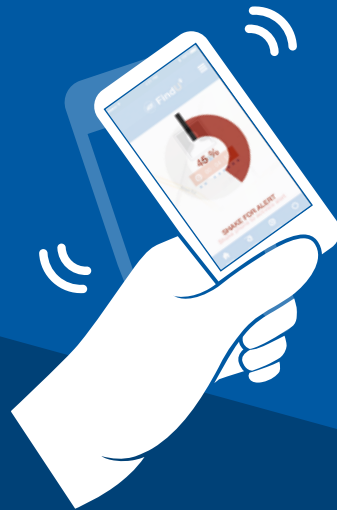
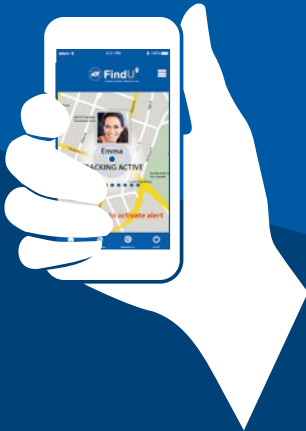
Step 1

Activate the ADT FindU application before you begin an activity or enter a high-risk area. Choose either Journey (to track you from A to B) or Meeting (to arrange a safety check-in at a certain time). ADT FindU will run even when the device is screen locked.

Successfully completed your activity without incident? Simply select Safe on the app to close.

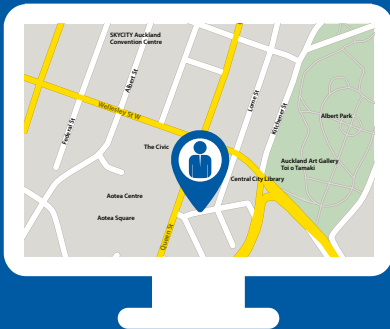
Step 2

In the event of an emergency, either shake or swipe the device until the alarm is activated. Continue to shake to sound an alarm and activate strobe light that can act as an immediate deterrent.



Step 3

An alert has been activated. ADT has been notified and the emergency recording features have been activated, including audio and visual footage.



Step 4

The ADT monitoring operator receives the emergency alert and actions agreed emergency procedures. At this stage the ADT operator can dispatch a Security Patrol Officer, or advise the Police, Fire Brigade or Ambulance services.



SECURITY



POLICE



FIRE



AMBULANCE



One very clever app with multiple uses.

For your family

- ✓ Keep an eye on your children while they're travelling to and from school with Journey feature.
- ✓ Teens can get help quickly while out with friends.
- ✓ Parents, guardians and caregivers are automatically contacted by both SMS and email if an emergency is activated.



For fitness enthusiasts

- ✓ Heading out for a run or cycle? Journey keeps you safe whilst moving between two points.
- ✓ Man Down feature will detect when you've fallen or stopped moving and notify ADT Security and your emergency contacts.



For fishermen and boaties

- ✓ Stay safe with ADT FindU Journey feature whilst moving between your favourite fishing or anchoring spots.
- ✓ Immediately notify your contacts if an emergency occurs.
- ✓ ADT FindU helps to provide extra protection by locating users in an emergency - assisting emergency services or Coastguard if required.



For stalking and domestic violence victims

- ✓ With three alert profiles - Personal Alert, Stealth Alarm and Deterrent Alarm - you can raise any type of alert based on the situation.
- ✓ Soft Alert feature allows you to get help simply by pressing the volume key on your phone (not available on all operating systems).
- ✓ Heading to a potentially hostile area where safety could be compromised? Use the Meeting feature.



For medical or mobility impaired

- ✓ Whether you're at home by yourself, or have a medical condition, an ADT FindU personal alarm is your ticket to a safer, more independent lifestyle.
- ✓ Know help is the push of a button away with ADT FindU and the range of wearable devices, such as a wristwatch, necklace or clip-on pendant.
- ✓ Man Down feature will detect when you've fallen or stopped moving, notifying ADT and your emergency contacts.
- ✓ Heading out for a walk? Use the ADT FindU Journey feature to keep your emergency contacts up to date on where you are. If an emergency occurs, ADT Security are ready to respond.

